

# International Association for Impact Assessment (IAIA)

## The Role of Consultation in Impact Mitigation – Habitat Enhancement Port Mann/Highway 1 Improvement Project, British Columbia



Photo courtesy of Transportation  
Investment Corporation

**Presented By:**  
**Robin Taylor, M.R.M.**  
**Environmental Services Group (ESG), Vancouver, Canada**

**Washington, D.C.**  
**February, 2013**

## "A camel is a horse *designed by a committee.*"

- Hypothesis: The camel works better than the horse.
- Case study: Impact mitigation for a large infrastructure project
- Review of community input from concept to completion

# Port Mann / Hwy 1 Improvement Project

- 37 km of Highway 1 improvements and new Port Mann Bridge
- Habitat creation and enhancement to offset impacts
- Transportation Investment Corporation



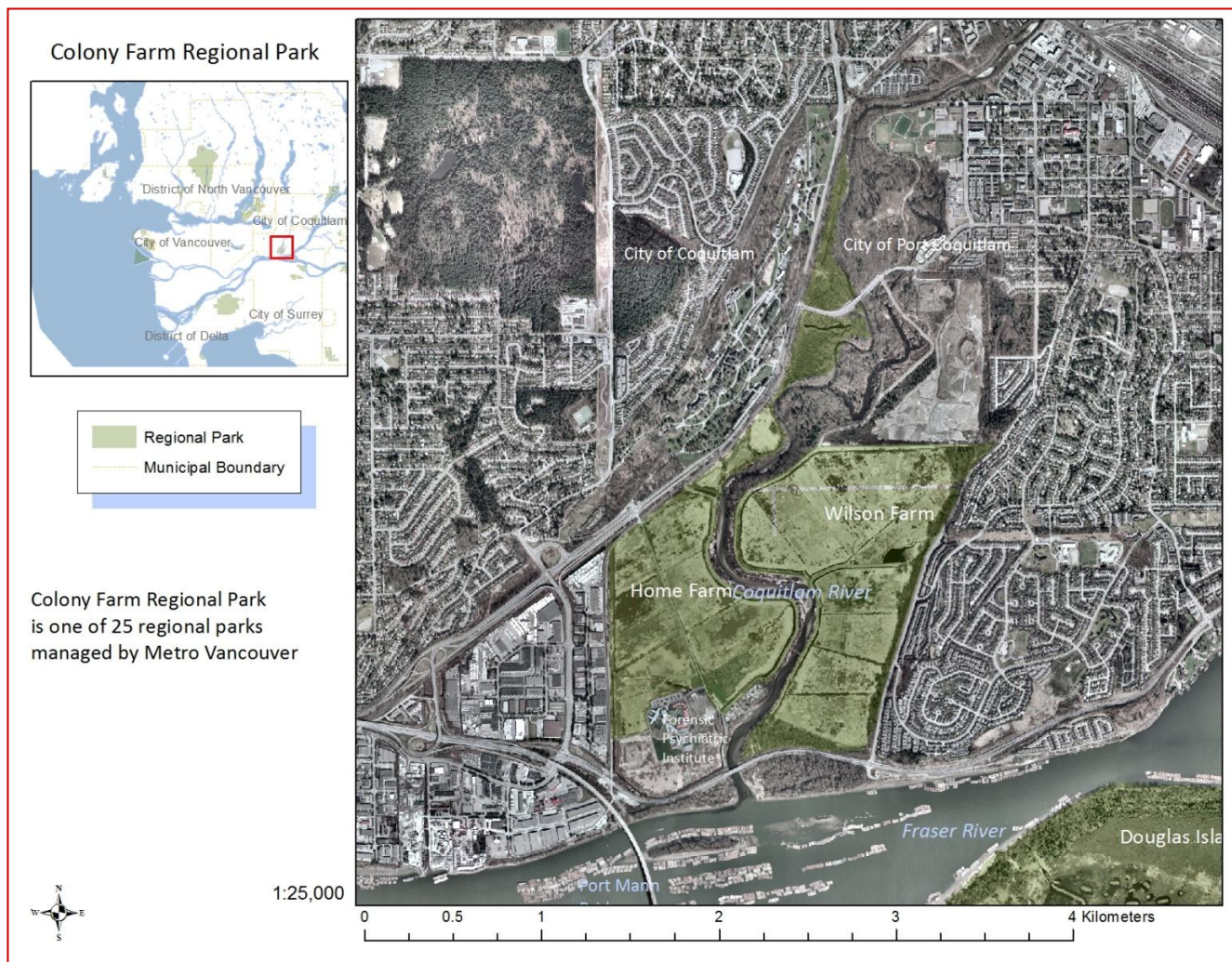


# Completed Habitat Enhancements





# Location of Wilson Farm Habitat Enhancements



# Existing Conditions

- Diked – no access for fish
- Low aquatic diversity
- Reedcanary grass / elderberry
- Poor drainage



# Approach to Community Consultation

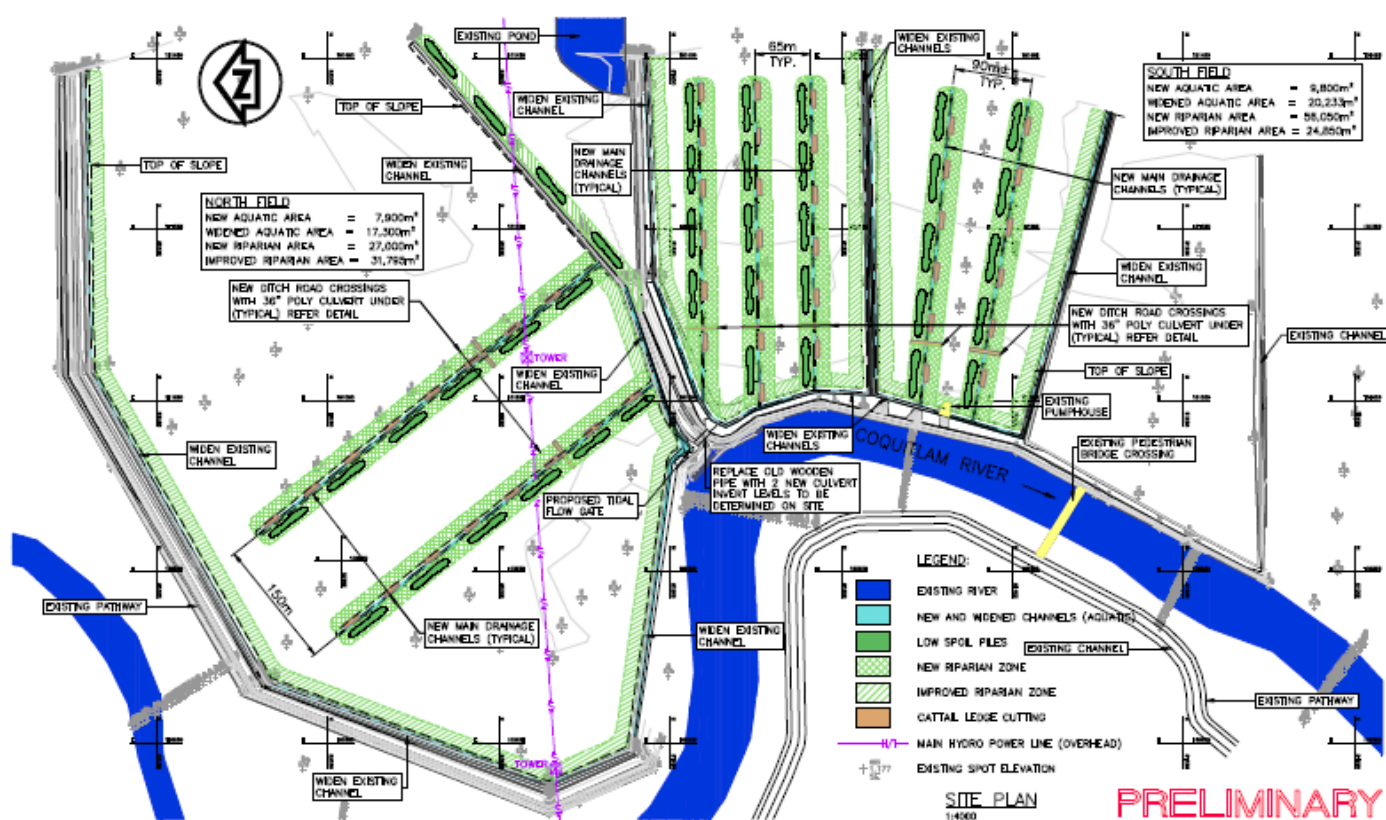
- Transportation Investment Corporation commitment to approach
- Planning – canvassing of agencies, stewardship groups
- Design – meetings, workshops, open houses
- Construction – on-site meetings, planting, public area, monitoring
- Post-construction – special projects, monitoring
- Stewardship groups, First Nations, general public, institutions, and non-profits







# Design – Returning the Salmon



## Change in Approach

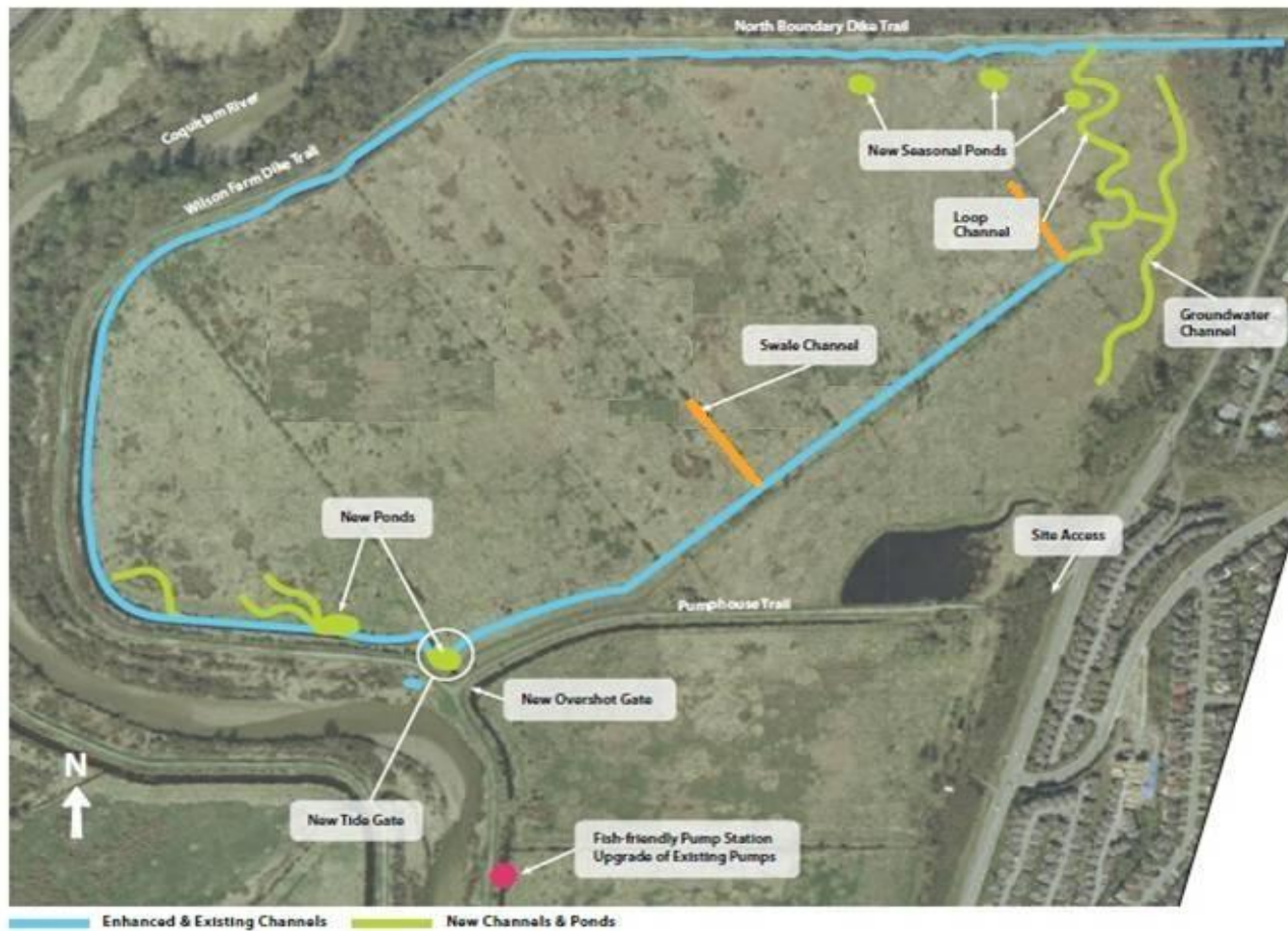
- old-field habitat for wildlife
- preserving existing landscapes



Photo courtesy of VARC



## Design – With Community Inputs





## Construction – First Nation Partnerships





## Partnerships with colleges





# Training Opportunities





# Effectiveness Monitoring



- Vegetation
- Small mammals
- Songbirds, raptors
- Herons
- Amphibians



## Bird Monitoring – Construction and Post-construction

Diversity Index	2010	2011	2012
Species Richness	51	51	52
Shannon-Wiener Index	3.06	3.12	3.09
Evenness	0.778	0.793	0.781
Simpson's Index	0.939	0.941	0.940

## Summary

- Community inputs evident from planning to post-construction
- Knowledge from community resulted in a more balanced, multiple objective project
- Our “camel” better reflects site conditions





## Thanks to the “Committee”

